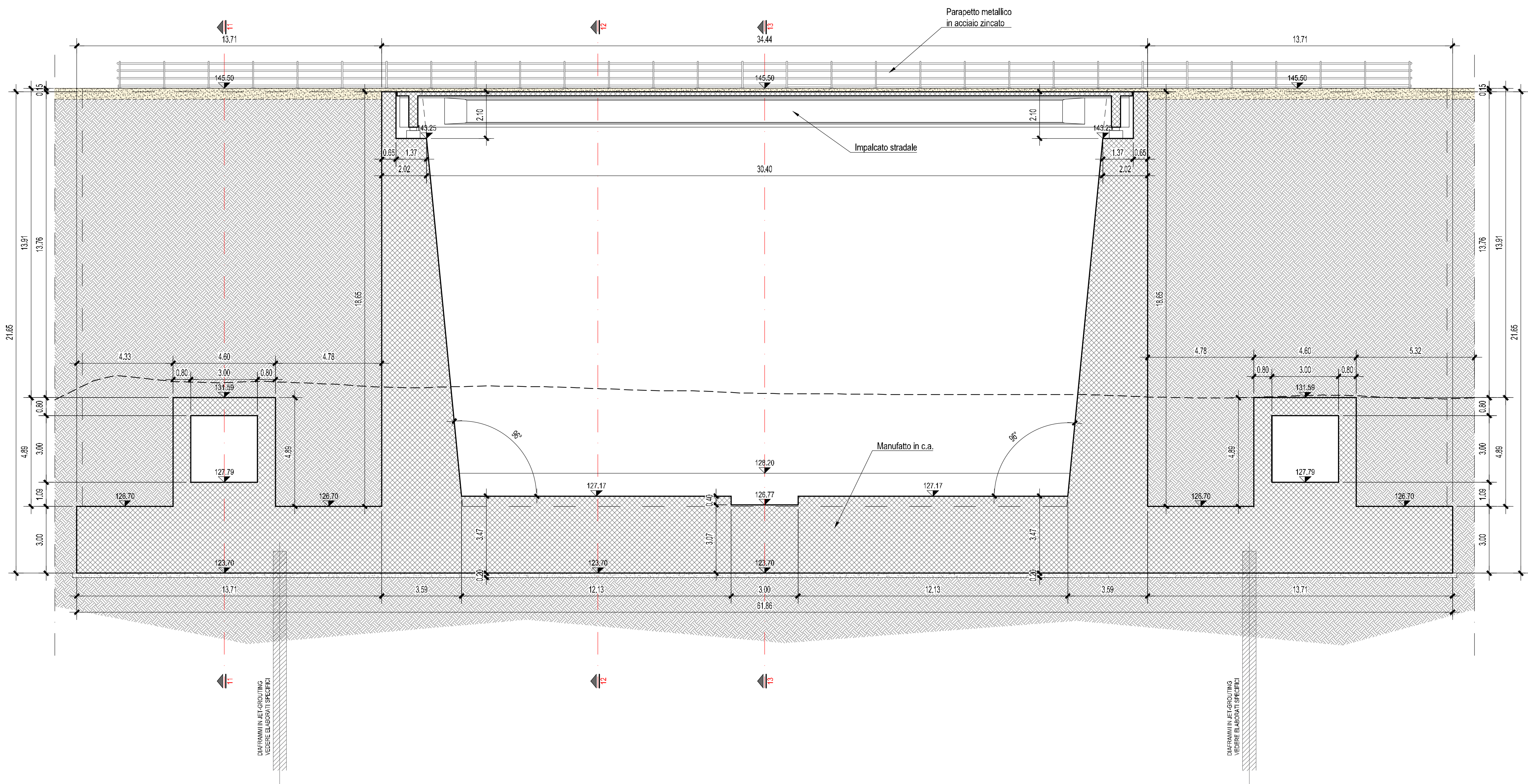
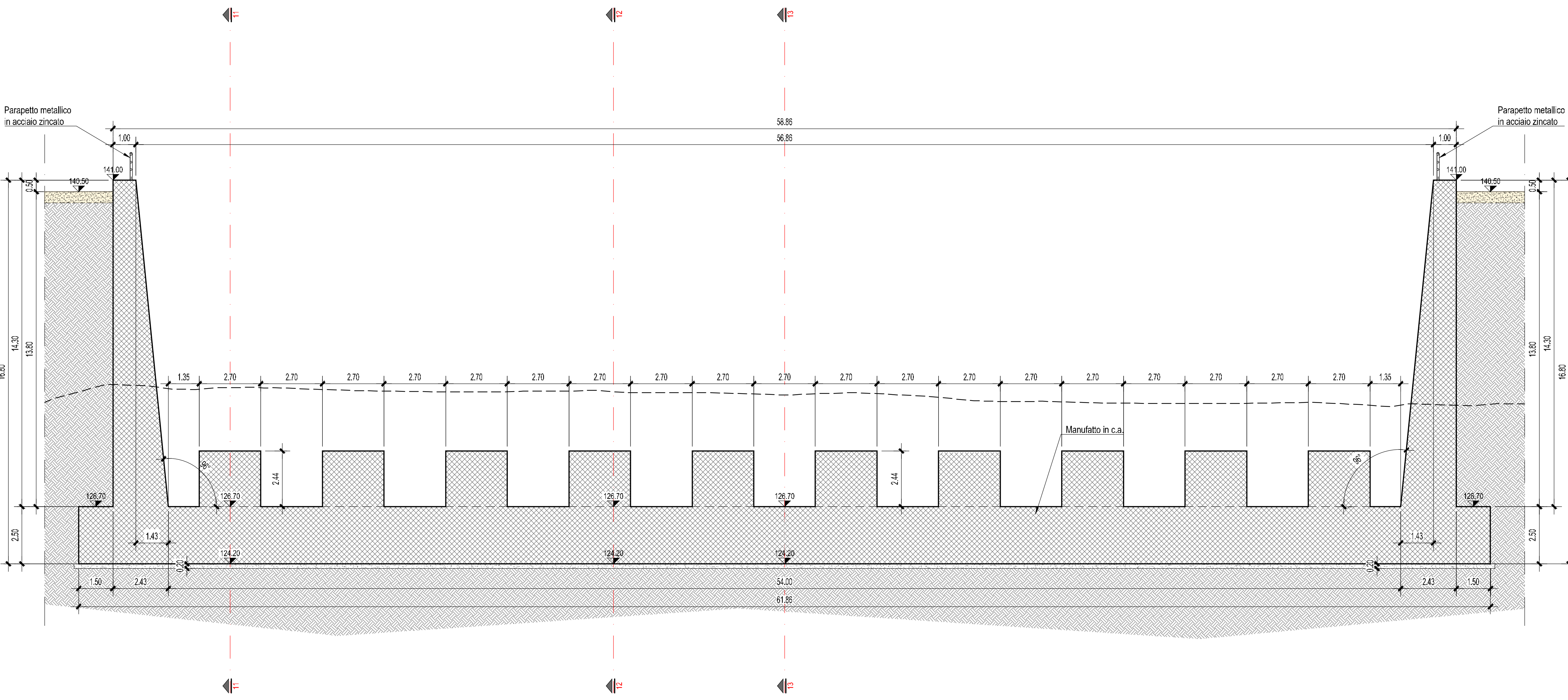


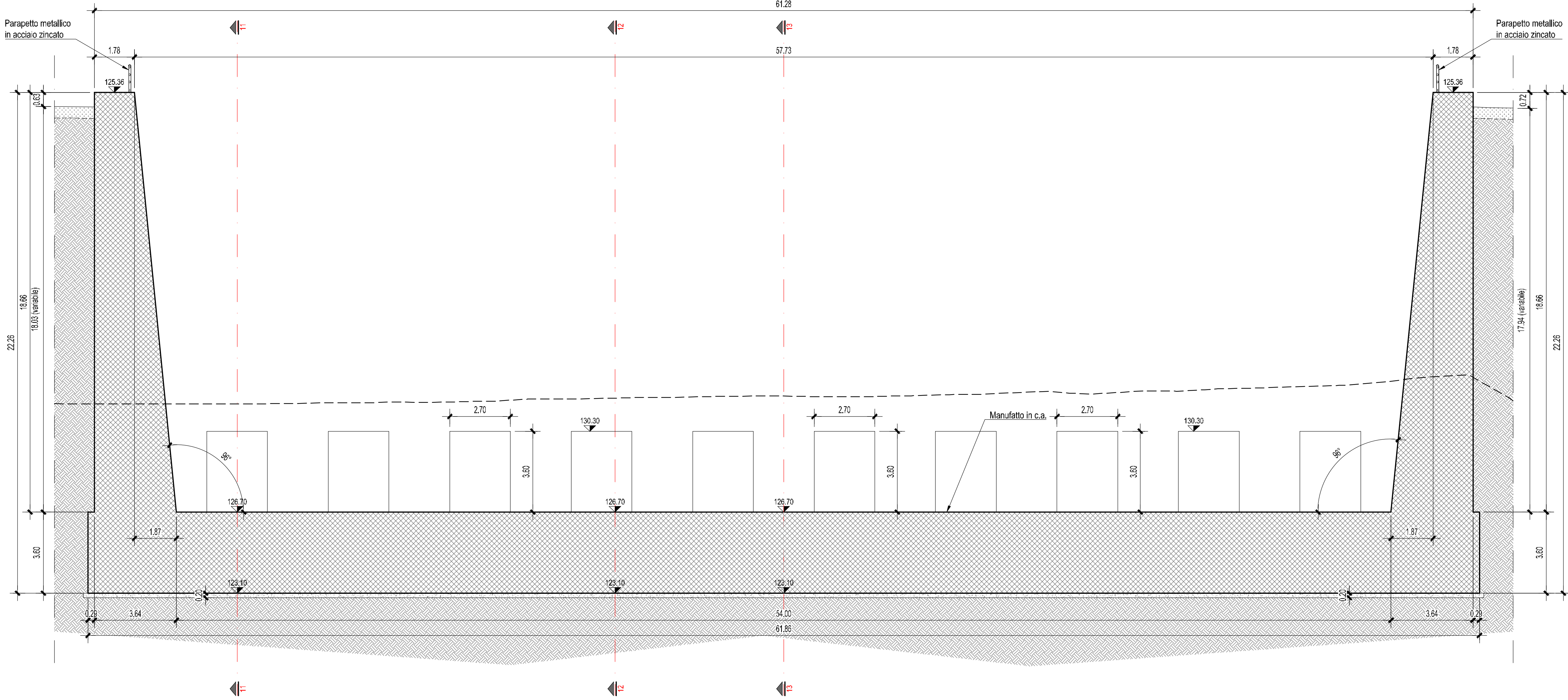
SEZIONE 5 - Scala 1:100



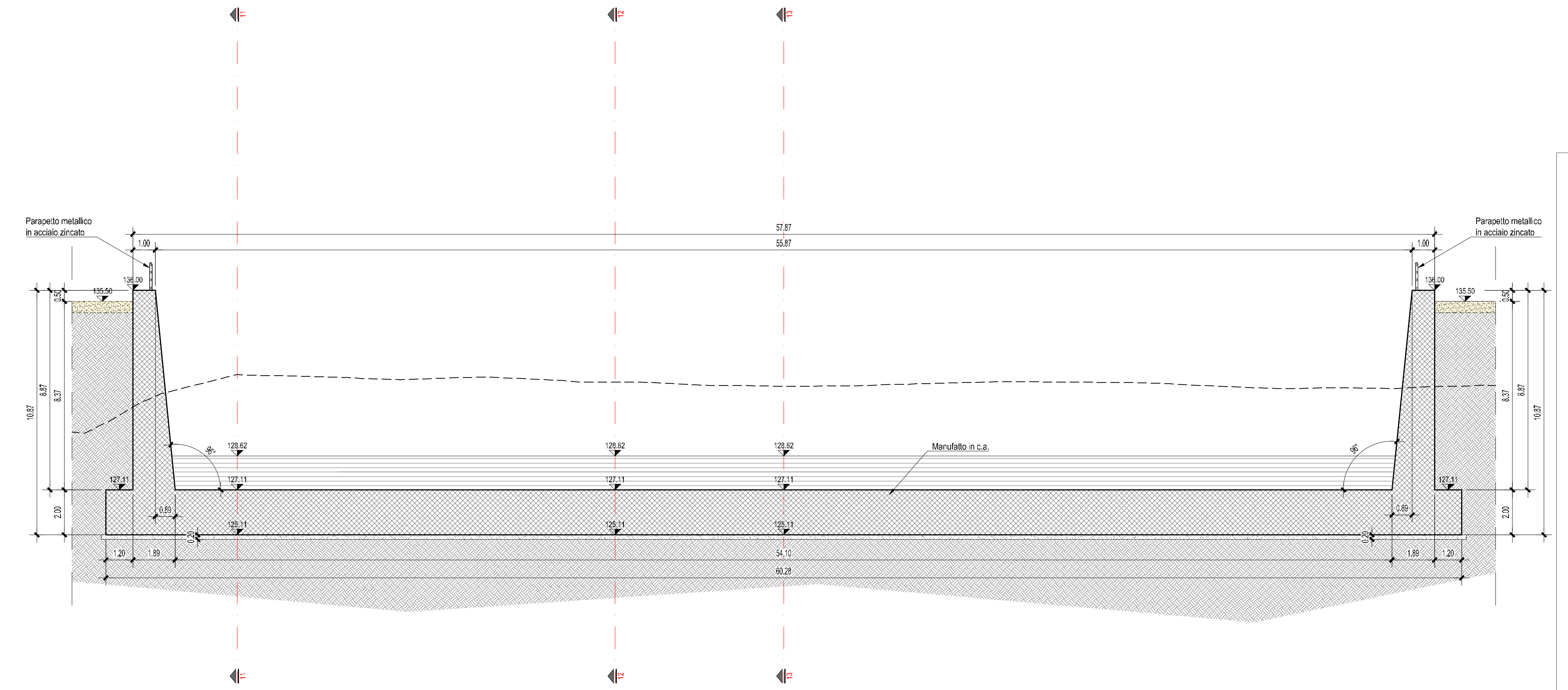
SEZIONE 7 - Scala 1:100



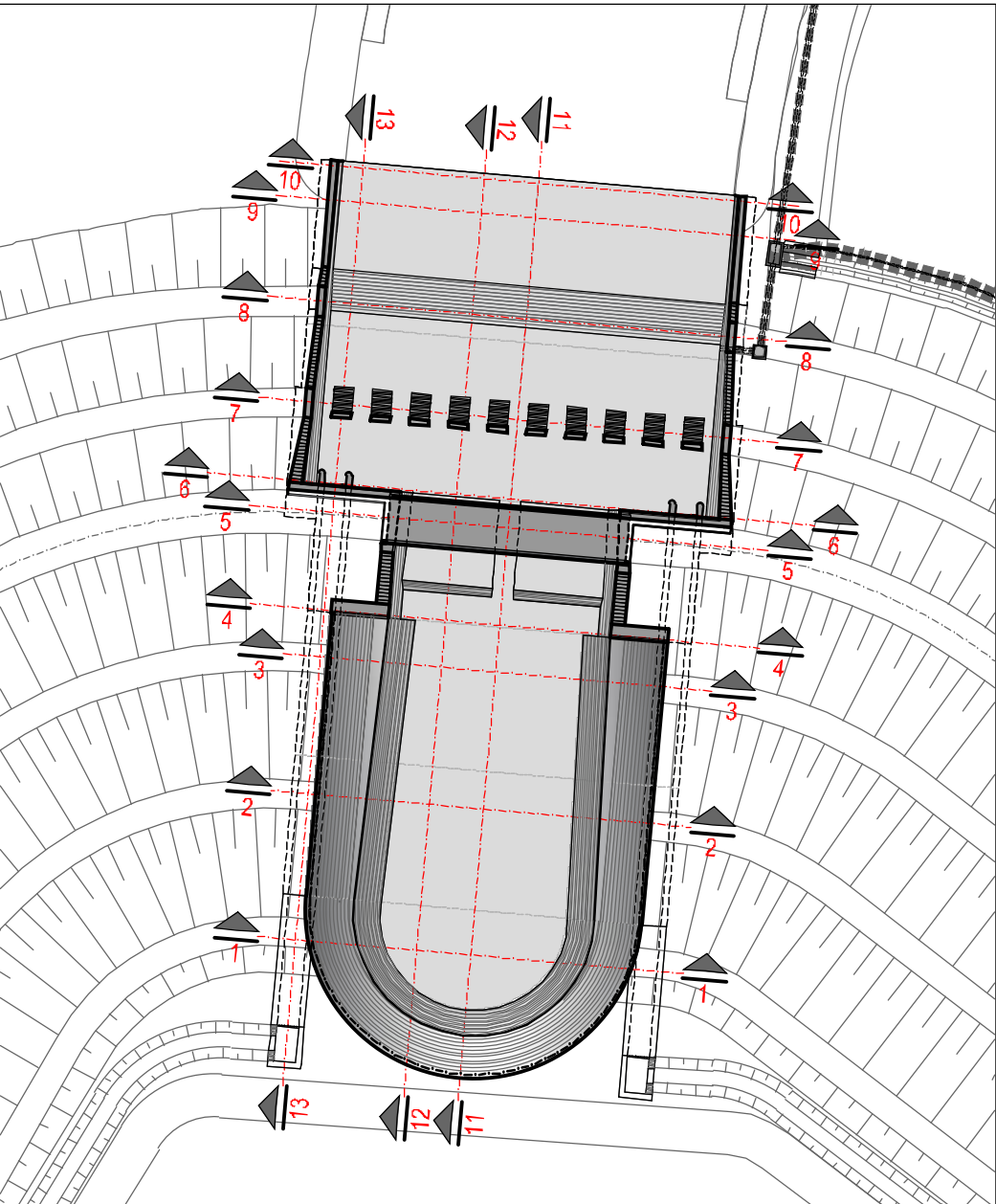
SEZIONE 6 - Scala 1:100



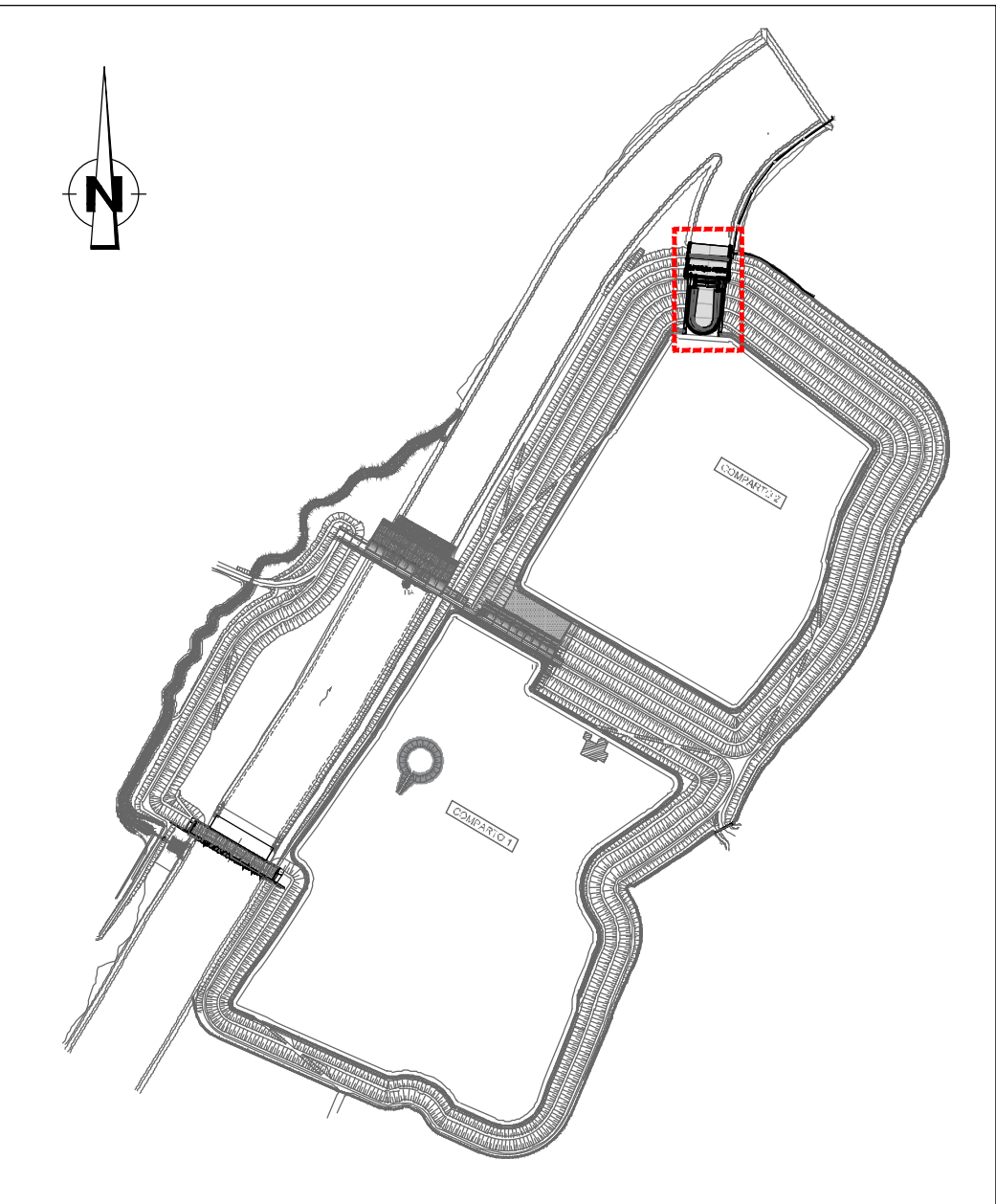
SEZIONE 8 - Scala 1:100



KEY-PLAN DI DETTAGLIO - Scala 1:1.000



KEY-PLAN - Scala 1:10.000



Via Garibaldi 75 - 43121 PARMA

CASSA DI ESPANSIONE DEL TORRENTE BAGANZA
NEI COMUNI DI FELINO, SALA BAGANZA,
COLLECCHIO E PARMA (PR-E-1047)



ASSOCIAZIONE TEMPORANEA DI IMPRESE			
BENEFICIARI			
IL R.U.P.:			
Dott. Ing. Mirella Vergani			
Dott. Ing. Roberto Bertero			
Dott. Ing. Roberto Bertero			
CODICE ELABORATO:			
BAG310MRCDSZ021			
1:100			
GENNAIO 2020			